



NOVA

EMERGENCY LIGHTING INVERTERS

6KW - 8KW - 10KW - 15KW - 17KW

NOVA INVERTERS

NOVA inverters convert normally on lighting into emergency lighting in the event of a power failure. Eliminate the need for stand alone emergency units, reduce maintenance and improve aesthetics. NOVA inverters offer high frequency, Pulse Width Modulated double conversion technology for a pure sine wave output. NOVA inverters are always active and have zero transfer time, constantly conditioning the incoming power and offering input power factor adjustment during normal utility power. A minimum 90 minute run time during power failure is standard.

GLOBAL MONITORING

- Auto-sense 10/100M Fast Ethernet.
- Provide SNMP, MIB to monitor & log UPS status.
- Manage & configure via Telnet, Web Browser or NMS.
- Support TCP/IP, UDP, SNMP, Telnet, SNTP, PPP, HTTP, SMTP Protocol.
- Sending both of SNMP TRAP and E-mail for events notification.
- Auto email daily Battery Backup history report.
- Basic SNMP (LAN) with WIFI.
- Advanced SNMP (LAN) with GPRS, Modem, WIFI.
- Event Log.



BEGHELLI USA
 3810 Executive Way
 Miramar, Florida 33025
 P: (954) 442-6600
 P: (800) 726-4316
 F: (954) 442-6677
www.beghelliusa.com



Beghelli



*Cabinet size varies based on load.



CSA listed, BAA (UL924 and UL924A)



STANDARD FEATURES

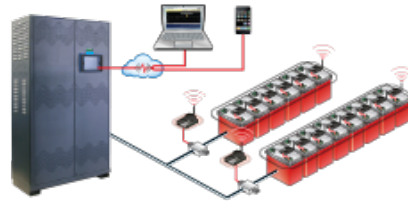
- Back-lit LCD Display For Monitoring.
- RS 232 & RS 485 Ports For Metering, Measuring, And Diagnostic.
- System Pre-wired For Optional Global Monitoring System (GMS).
- Battery Breaker.
- Inverter Test Switch.
- Generator Compatible with Automatic Governor (Slew Rate 2Hz/sec).
- High Frequency PWM with Digital.
- Signal Processing Technology.
- Built-in Input Power Factor Correction.
- 2 Year Warranty.

BATTERY MONITORING

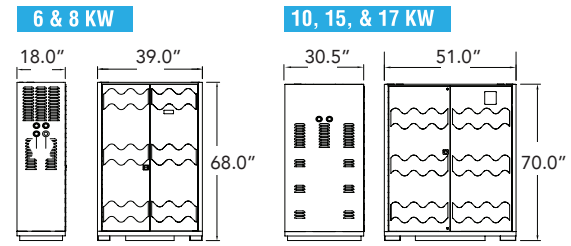
Wireless Battery Monitoring System
(String of Batteries or Individual Battery)

Measures and Records:

- Battery and String Voltage.
- String Current.
- Battery Cabinet Temperature.
- Battery Terminal Temperature.
- Battery Impedence.



DIMENSIONS & WEIGHT



NOVA Series	Weight (lbs)			
	Input 120 or 208 or 240 or 277	Output 120 or 208 or 240 or 277	Input 120 or 208 or 240 or 277 or 480	Output 120/240 or 120/277 or 480/240
6KW	1224 lbs		1284 lbs	
8KW	1289 lbs		1469 lbs	
10KW	2695 lbs		2870 lbs	
15KW	4172 lbs		4512 lbs	
17KW	4172 lbs		4512 lbs	

OPTIONS

- Secondary Auxiliary Circuit Breakers: Normally On, Normally Off, Normally Off w/Delay, Trip Alarm.
- Certified Zone 4 Seismic Bracket (pair).
- Remote Status Panel U with Audio.
- Alarm and Silence Switch.
- Local Audio Alarm with Silence Switch.

ENVIRONMENTAL SPECIFICATIONS

Environmental Specifications	
Humidity	0 - 95% RH w/ no condensation
Operating Temp	UPS: 0° to 40°C. (32° - 104°F) Battery: 20° to 30°C. (68° - 86°F)
Storage Temp	-20° to 60°C. (-4° - 140°F)
Altitude	Up to 10,000 ft

CONFIGURATIONS

Series	Wattages	Input Voltage	Output Voltage
NV	6KW	120V	120V
	8KW	208V	120/240V
	10KW	240V	120/277V *
	15KW	277V	208V
	17KW	480V	240V
			277V
			480V
			480/277V

*277=50% & 120=25%