

LUCE SOLARE

solar integrated systems

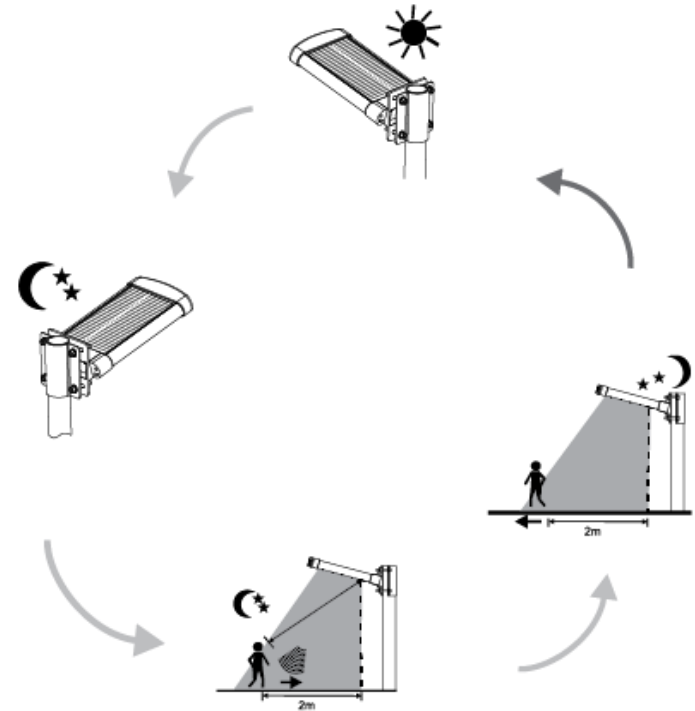
Topics of Discussion

- ✓ The Basics of Solar Technology
- ✓ Intro to LUCE SOLARE BLS SERIES
- ✓ Benefits
- ✓ Specifications
- ✓ Applications
- ✓ Q&A

The Basics of Solar Technology

The Basics of Solar Technology

- Very simply, the PV Module converts photons into electricity.
- The solar panels are made up of photovoltaic (PV) cells, which convert sunlight into direct current (DC) and charge / maintain the batteries throughout the day.
- The charge controller regulates the battery charging to achieve optimal capacity in sunlight.



LUCE SOLARE BLS SERIES

[Video](#)

- **BLS-2A** - 11W - 1600lm
- **BLS-4A** - 23W - 3300lm
- **BLS-6A** - 34W - 4900lm
- **BLS-8A** - 45W - 6500lm
- **BLS-10A** - 57W - 8100lm

Color Temperature - 5700K Standard
Distribution – Type II

BLS SERIES OPERATING MODES

Luce Solare (BLS Series) has three operating modes.

Green Light

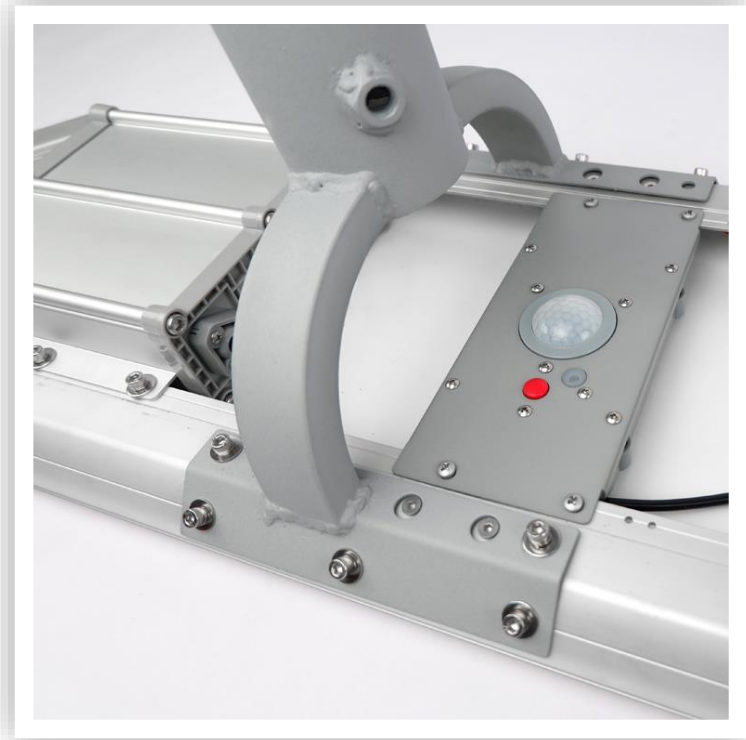
- 5 hours at 100%
- 7 hours at 30% power, when motion activated increases to full brightness.

Orange Light

- 5 hours at 70%
- 7 hours at 30% power, when motion activated increases to full brightness.

Red Light

- 12 hours at 30% power, when motion activated increases to full brightness.



Benefits



- All in one solution: easy to spec
- Environmentally friendly
- Easy, low-cost installation
- No hassles of complex cabling
- \$0 energy cost
- IP65
- Type II distribution



Specifications

Specifications



Sun for Life

| LUCE SOLARE | BLS-2A | BLS-4A | BLS-6A | BLS-8A | BLS-10A |
|--------------------------------|---------------------|---------------------|---------------------|---------------------|---------------------|
| System Wattage | 11.3 W | 22.6 W | 33.9 W | 45.3 W | 56.6 W |
| Max Lumen Output | 1630 lm | 3259 lm | 4888 lm | 6518 lm | 8148 lm |
| Color Temperature | 5700K | | | | |
| Discharge Time* | 10 -12 hrs | | | | |
| Charge Time* | 6 hrs min | 8 hrs min | 8 hrs min | 8 hrs min | |
| Mounting Height | 7 - 10 ft | 9 - 13 ft | 15 - 20 ft | 19 - 26 ft | 21 - 32 ft |
| Effective Projected Area (EPA) | 2.3 ft ² | 3.2 ft ² | 4.5 ft ² | 6.4 ft ² | 6.4 ft ² |
| Weight | 19.8 lbs | 24.6 lbs | 27 lbs | 45 lbs | 47.4 lbs |
| Warranty | 3 years | | | | |

* Varies based on conditions.

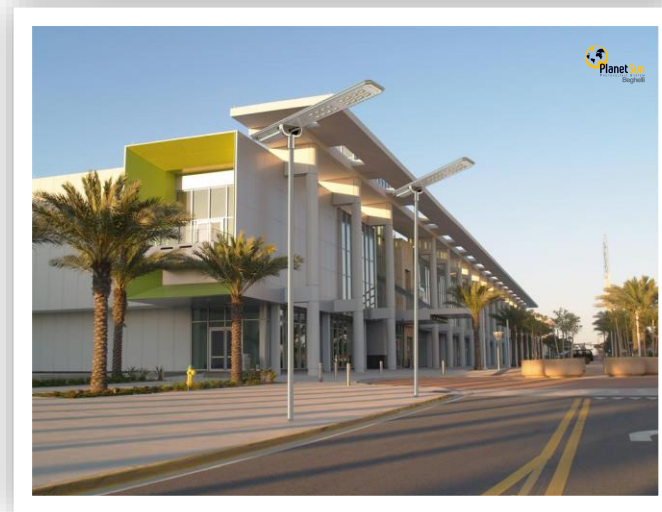
Upon proper installation and start-up, Beghelli does not guarantee product performance meets specified performance levels. Unknown environmental conditions effect performance. In no event shall Beghelli be liable for special, incidental or consequential damages related directly or indirectly to the lack of product functionality and / or performance.



Applications

Applications

- Anywhere electrical power is limited or non existent
 - Country roads
 - Farms
 - Trails
- Temporary lighting
- Pathways
- City and community parks
- Roads
- Public walkways
- Parking areas
- Open areas



Unexpected/unknown environmental conditions affect performance, therefore solar is not recommended as a primary light source.





SOLAR PANEL, BATTERY, AND LED ALL IN ONE!

BLS SERIES



HIGH POWER
LEDS



PROGRAM SWITCH
&
PIR MOTION SENSOR



BATTERY



1600 to 8100 lm

Upon proper installation and start-up, Beghelli does not guarantee product performance meets specified performance levels. Unknown environmental conditions affect performance. In no event shall Beghelli be liable for special, incidental or consequential damages related directly or indirectly to the lack of product functionality and / or performance.

LUCE SOLARE

solar integrated systems

