

Job Name: \_\_\_\_\_  
 Model: \_\_\_\_\_  
 Type: \_\_\_\_\_  
 Date: \_\_\_\_\_



### ■ specifications: internal

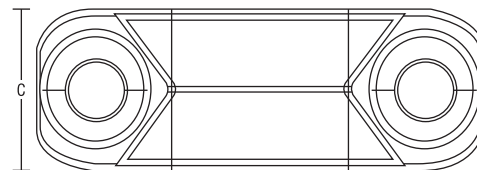
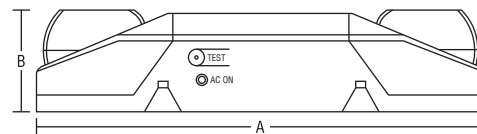
The **XMR** is configured with a 120/277VAC input. Standard features include solid-state charging circuitry, low voltage disconnect, AC lockout and brownout protection. Maintenance free 6V 4.5Ah sealed lead calcium battery.

### ■ specifications: external

The **XMR** is constructed from high quality 5VA flame & corrosion resistant, high-impact thermoplastic. White finish is standard (black optional). The universal mounting bracket is easily snapped onto the **XMR** housing. Knockout provided for conduit installations.

### ■ emergency heads

Two fully adjustable, semi-recessed 7W LED MR16 lamp heads deliver 76" on-center spacing (7.5' mounting height). The gimbal style head assemblies allow precise positioning.



### ■ specifications: electrical

**BATTERY:** The **XMR** is configured standard with a single 6V 4.5Ah maintenance-free, sealed lead calcium battery. 90 minutes emergency duration minimum. 24 hour charge time.

**CIRCUIT:** The **XMR** features 120/277VAC input with current limit protection. External test switch and monitor LED are standard.

| INPUT WATTS (W) |      | INPUT AMPS (A) |       |
|-----------------|------|----------------|-------|
| 120V            | 277V | 120V           | 277V  |
| 4.2             | 5.2  | 0.039          | 0.021 |

| Series | A              | B            | C           |
|--------|----------------|--------------|-------------|
| XMR    | 13.7"<br>348mm | 3.1"<br>79mm | 5"<br>127mm |

### ■ certifications

- UL924
- NFPA 101 Life Safety Code
- NEC, OSHA, Local and State Codes
- UL Listed for Damp Locations (20°C to 40°C)

### ■ warranty

The **XMR** comes with a 3-year factory warranty. Lamps are not covered under the warranty. Deliberate damage, misuse, or improper installation effectively cancel the warranty.

### ■ ordering logic

EXAMPLE: XMR S1H0

| Series | Capacity    | Lamps             | Options                                    |
|--------|-------------|-------------------|--|
| XMR    | S1 (6V 14W) | H0 (7W LED lamps) | B (black finish)<br>USA (assembled in USA) |